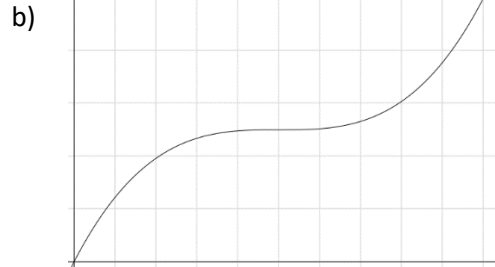
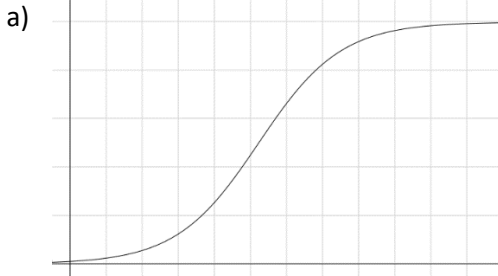


Graphs from verbal descriptions- Posttest

Name:

Target 1: I understand how to identify graphs from verbal descriptions

1. Jamil is jogging between his home and the park. He starts his jog slowly and then increases his speed until he is about halfway there and then decreases his speed until he reaches the park. Which graph below more accurately reflects the distance of Jamil from his house as function of time? Explain why.



Target 2: I understand how to create graphs from verbal descriptions (distance time graphs)

2. You leave your English class and walk towards your math class. When you are about halfway there you decide to go back to your English class and ask the professor a question. You stay at the class for a few minutes getting your question answered and then go to your math class at quicker pace (you don't want to be late). Graph the distance between you and your English classroom as a function of time, from the moment you originally leave the English classroom. Explain why you drew the graph the way you did.

Target 3: I understand how to create graph from physical descriptions using a constant rate of change

3. Image the vase shown below filling with water at a constant rate. Sketch a graph of the height of the bottle as a function of the amount of water that is in the bottle. Start from an empty bottle and end when the bottle is completely full. Explain why you drew the graph the way you did.

