



AI Tools Available for EWU Accounts



AI in Higher Education

EDUCAUSE AI Landscape Study

“The higher education community is still looking for common ground on how AI should and should not be used for learning and work.”

“AI tools bring great opportunity for higher education, but not without risk.”

<https://www.educause.edu/ecar/research-publications/2024/2024-educause-ai-landscape-study/the-future-of-ai-in-higher-education>



AI in Higher Education

EDUCAUSE AI Landscape Study

Appropriate Uses

- Personalized student support: tutoring, translating, academic/career advising, easing administrative processes, brainstorming, editing, accessibility tools and assistive technology
- Teaching assistant: course design, grading, providing feedback to students, providing feedback to faculty, improving accessibility of course materials
- Research assistant: finding and summarizing literature, sorting and analyzing data, predictive modeling, creating data visualizations
- Administrative assistant: automating tasks, drafting/revising communications (e.g., email), transcribing audio
- Learning analytics: analyzing and visualizing student success data, providing insights for student recruitment and retention
- Digital literacy education: preparing students to be part of the digital workforce and society



AI in Higher Education

EDUCAUSE AI Landscape Study

Inappropriate Uses

- Trusting generative AI outputs without human oversight
- Simulating human judgment (e.g., grading student work, peer reviewing academic articles, writing recommendation letters)
- Representing AI-generated work as one's own (e.g., using AI to write papers, take exams)
- Not citing AI as a resource for generated content
- Making high-stakes decisions (e.g., student admissions) without human oversight
- Conducting invasive data collection or surveillance
- Relying on AI tools in place of human thought and creativity
- Giving tools unauthorized access to sensitive data (e.g., PII) or intellectual property



Generative AI “Policies”

Not policies, guidelines.

[Academic Guidelines for the Use of Generative AI](#)

[Employee Guidelines for Responsible Use of Generative AI](#)



Available Licensed Tools



Google Gemini: <https://gemini.google.com/>



Microsoft 365 CoPilot Chat:

<https://m365.cloud.microsoft/chat>

and mobile apps, Chrome/Edge browser extensions

Use your EWU account



Available Licensed Tools

Academic Integrity



Copyleaks: <https://copyleaks.com/academic-integrity>

Access through Canvas



Articles and FAQs

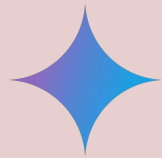
- [What AI Options Are Available to EWU Accounts?](#)
- [What is Microsoft Copilot Chat?](#)
- [What is Google Gemini for Google Workspace?](#)
- [Resources for Google Gemini](#)
- [Knowledgebase Plagiarism Detection](#)



Additional License Cost



Microsoft 365 Copilot: \$360.00 per user per year



Google Gemini Education: \$240.00 per user per year

Contact the Help Desk to
purchase add-on licenses.






M365 Copilot Comparison

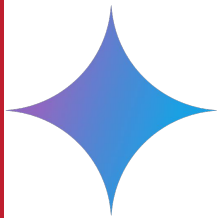
		<div>● Included ▲ Included — Metered</div>	Microsoft 365 Copilot Chat	Microsoft 365 Copilot
Chat	Copilot Chat – Web grounded (powered by GPT-4o)	●	●	
	Copilot Chat – Work grounded (work data in your tenant’s Microsoft Graph and 3rd party data via Graph connectors)		●	
	Copilot Pages	●	●	
	File upload ¹	●	●	
	Code Interpreter ¹	●	●	
	Image generation ¹	●	●	
Agents ²	Create agents using Copilot Studio ³ , including SharePoint agents	●	●	
	Discover and pin agents	●	●	
	Use agents grounded in Web data	●	●	
	Use agents grounded in work data (work data in your tenant’s Microsoft Graph and 3rd party data via Graph connectors)	▲	●	
	Use agents that act independently using autonomous actions	▲	▲	
Personal assistant	Copilot reasons over personal work data (e.g., Outlook, OneDrive, Teams meeting transcripts and chats)		●	
	Copilot in Teams		●	
	Copilot in Outlook		●	
	Copilot in Word		●	
	Copilot in Excel		●	
	Copilot in PowerPoint		●	
	Copilot Actions		In preview	
	Pre-built M365 agents (Interpreter, Facilitator, Project Manager, Employee Self-Service)		In preview	
Copilot Control System	Enterprise Data Protection (EDP)	●	●	
	IT management controls	●	●	
	Agent management	●	●	
	SharePoint Advanced Management		●	
	Copilot Analytics to measure usage and adoption ⁴		●	
	Pre-built reports and advanced analytics to measure ROI		●	

1. Limits apply. 2. Applies to employee-facing agents only. 3. Learn more about the full capabilities of Copilot Studio: aka.ms/CopilotStudioCapabilities 4. Basic reporting in Microsoft Admin Center available for Copilot Chat.

EWU Google Licensing

	Education Fundamentals ¹	Education Standard	Teaching and Learning Upgrade	Education Plus
 Gemini Your AI assistant for education	✓	✓	✓	✓
<ul style="list-style-type: none"> • Access the Gemini app on web and mobile 	✓	✓	✓	✓
<ul style="list-style-type: none"> • Added data protection - data isn't reviewed by human reviewers or used to train AI models 	✓	✓	✓	✓
<ul style="list-style-type: none"> • Enterprise-grade data protection - Core Service covered by GWFE Terms of Service 	—	✓	—	✓
<ul style="list-style-type: none"> • Gemini in Gmail, Docs, Classroom and more 	Available for an added cost	Available for an added cost	Available for an added cost	Available for an added cost
<ul style="list-style-type: none"> • Gemini Advanced with our most capable AI models widely available and priority access to new features 	Available for an added cost	Available for an added cost	Available for an added cost	Available for an added cost





Gemini Addon

Gemini Education

- Gemini in Docs, Slides, Sheets, Drive and Meet
- [Gemini Advanced](#), providing access to premium features like [Gems](#)
- [NotebookLM Plus](#), helping accelerate learning and knowledge sharing with AI grounded in your sources
- Most capable AI models widely available
- Monthly usage limits



MS and Google License Cost Comparison

Microsoft 365 A3
Faculty/Staff:
\$54.71 per user per
year

Google Workspace
Faculty/Staff:
\$4.25 per user per
year



Privacy and Security

When using your EWU account with Gemini or Microsoft Copilot Chat your data is encrypted at rest and in transit.

Your data is not reviewed by anyone to improve AI models, used to train AI models, or shared with other users or institutions.

State data retention requirements apply to your conversations with any and all AI tools. By using your EWU account, you are protected!



Google Terms



Terms & Privacy

Your privacy and enterprise conversation data is secure

Your use of Gemini at Eastern Washington University is based on your organization's agreement with Google. Your Gemini conversations won't be used to train our generative machine-learning models. Your [Gemini Activity](#) currently can't be turned off.

No thanks

Use Gemini



Microsoft Terms

Copilot inherits your organization's security, compliance, and privacy policies set up in Microsoft 365. Microsoft 365 Copilot is compliant with our existing privacy, security, and compliance commitments to Microsoft 365 commercial customers, including the General Data Protection Regulation (GDPR) and European Union (EU) Data Boundary.

Prompts, responses, and data accessed through Microsoft Graph aren't used to train foundation LLMs, including those used by Microsoft 365 Copilot.

Microsoft 365 Copilot operates with multiple protections, which include, but are not limited to, blocking harmful content, detecting protected material, and blocking prompt injections (jailbreak attacks).

<https://learn.microsoft.com/en-us/copilot/microsoft-365/microsoft-365-copilot-privacy>



What About Other AI Tools?

No data sharing agreements* and no enterprise licensing.

Do not share or use university data with these tools. You could violate FERPA or state privacy laws.



*required by state statute

Questions?

IT Help Desk

- helpdesk@ewu.edu
- x2247

Instructional Technology and Web Services

- instructionaltech@ewu.edu
- <https://ewu.zoom.us/j/145106536>
- x6656

